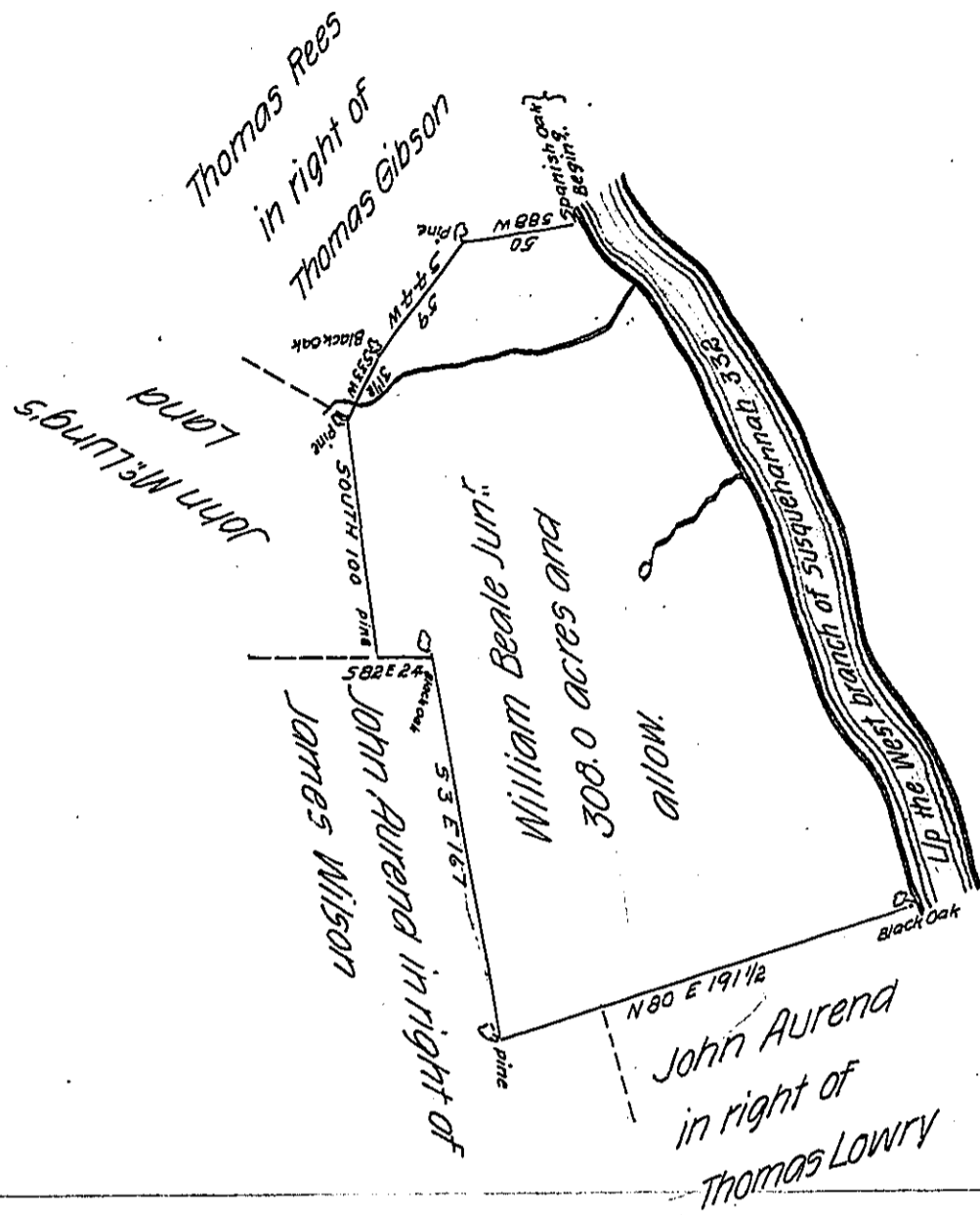


Courses & distances
up the West Branch —

N 17 W 188
N 20 W 49
N 24 W 31
N 37 W 64

332



The draught of a tract of land called Mount Pleasant situate on the West Branch of the River Susquehanna in Buffalo Township Northumberland County containing three hundred and eight acres with the usual allowance of six acres P cent for roads surveyed the 4th day of August Anno Dom 1769 in pursuance of an order of survey to William Beale Junr. bearing date at Philad^a. the 3^d day of April 1769 and numbered 442

To John Lukens Esq. S. E. }
of Pennsylvania

P-W^m Maclay — —

IN TESTIMONY that the above is a copy of the original remaining on file in the Department of Internal Affairs of Pennsylvania, made conformably to an Act of Assembly approved the 16th day of February, 1833, I have hereunto set my Hand and caused the Seal of said Department to be affixed at Harrisburg, this twenty third day of May 1906

Isaac R. Brown
Secretary of Internal Affairs.